



THE CHURCH
OF ENGLAND
BIRMINGHAM



Statement of Needs

Contents

Introduction.....	3
Transforming Church hymn.....	4
Transforming Church vision.....	5
Poem: Kingdom Ways of Counting.....	6
The qualities and skills of the next Bishop of Birmingham.....	7
<i>'Growing churches'</i>	
Number of disciples.....	9
Intergenerational engagement.....	10
Flourishing leadership.....	13
<i>'at the heart'</i>	
Culture of prayer.....	15
Depth of discipleship.....	17
Financial sustainability.....	20
<i>'of each community'</i>	
Diverse worshipping communities.....	21
Partnerships and community impact.....	24
Environmental sustainability.....	27
Structures and governance.....	28
Resource library.....	29
Sources.....	30

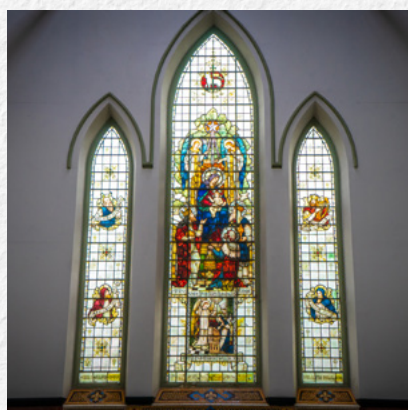
Introduction

Birmingham becoming the cradle of the industrial revolution gave rise to the identity of a 'city of a 1000 Trades', however Church of England Birmingham rural parish communities make up 15% of our family^[2]. As hinted at by with the incredible wealth of languages found in the region's education establishments, the Church of England Birmingham is better reflected as 'a region of a 1000 cultures and traditions'. It is with thanks for the 16 year ministry of Bishop David Urquhart, that we now look forward to our next chapter of the Church of England Birmingham.

At the heart of our calling to serve each of the diverse communities of our region in all their variety of contexts is our renewed commitment and focus on our shared diocesan Transforming Church vision:

Growing churches at the heart of each community

A vision first discerned in 2009 that has continued to capture the essence of the Church of England Birmingham ministries, mission and our energy for innovation. Expressed uniquely by our Parishes, in their newly forming Oversight Areas, across refreshed Deaneries and as a Church of England diocese of multiple charisms. A calling to be transformed ourselves and together be an active transforming church. God is real, alive and active among us. Continuing to grow ourselves as disciples of Jesus Christ and in awareness of our walk with him, as well as inviting others to follow him, is the heart of our activities.



*Here and now we're drawn together:
hold us all in one embrace.
Help us see, in one another,
difference as a gift of grace.
As each passing generation
worships you in fresh new ways,
join our songs with all creation,
lift our voice to sing your praise.*

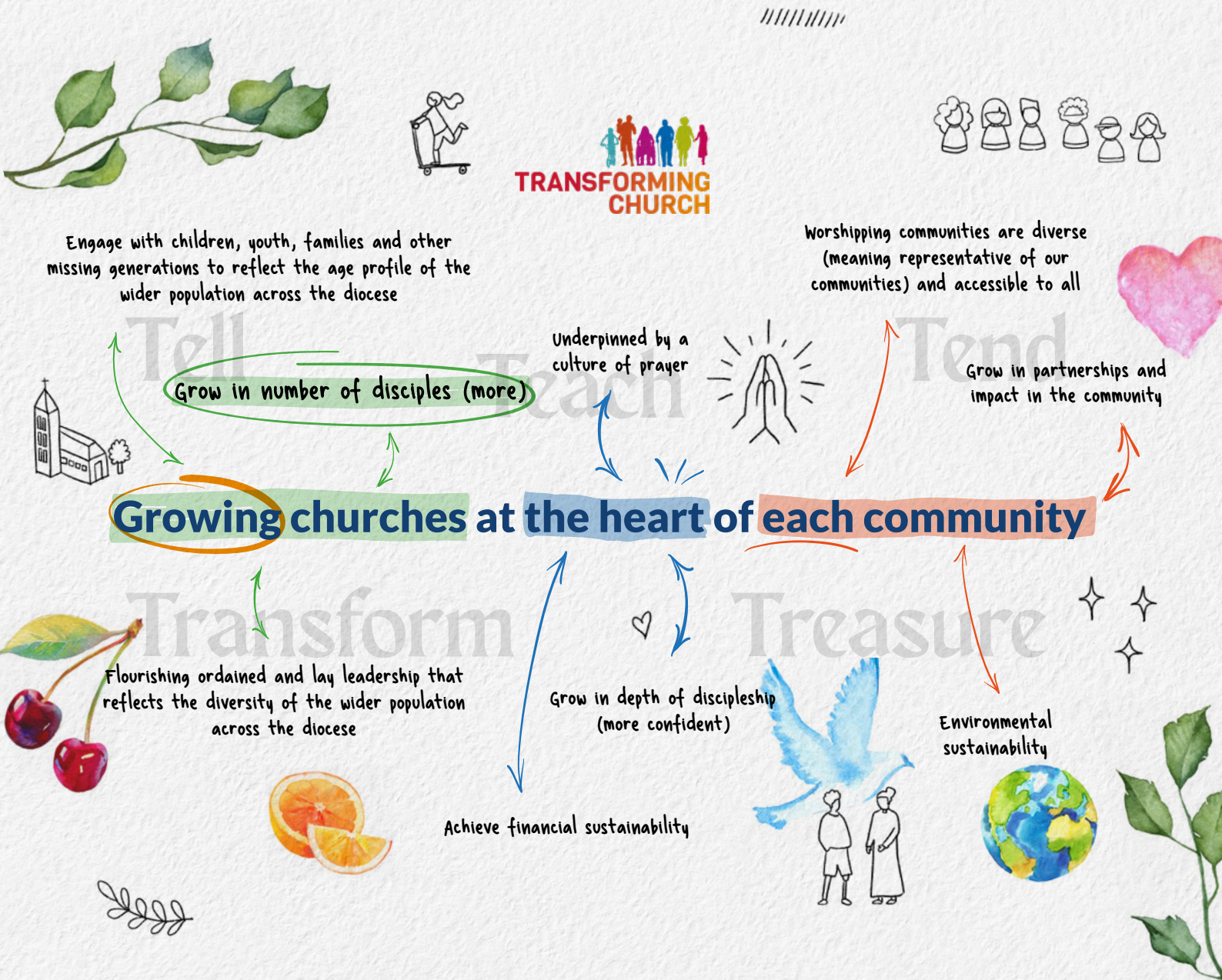
*Lord, affirm our shared vocation:
may we bring your plans to birth,
build a church on Christ's foundation,
fit to tend a troubled earth.
Growing, praying, sharing, learning,
deep in wisdom, broad in scope,
love-revealing, truth-discerning,
living out the gospel hope.*

*In your work of transformation
you are making all things new.
Stir our hearts' imagination,
call us now to work with you.
As we live the Great Commission
all will find their part to play:
Send us out to share your mission,
joyful in the world today.*

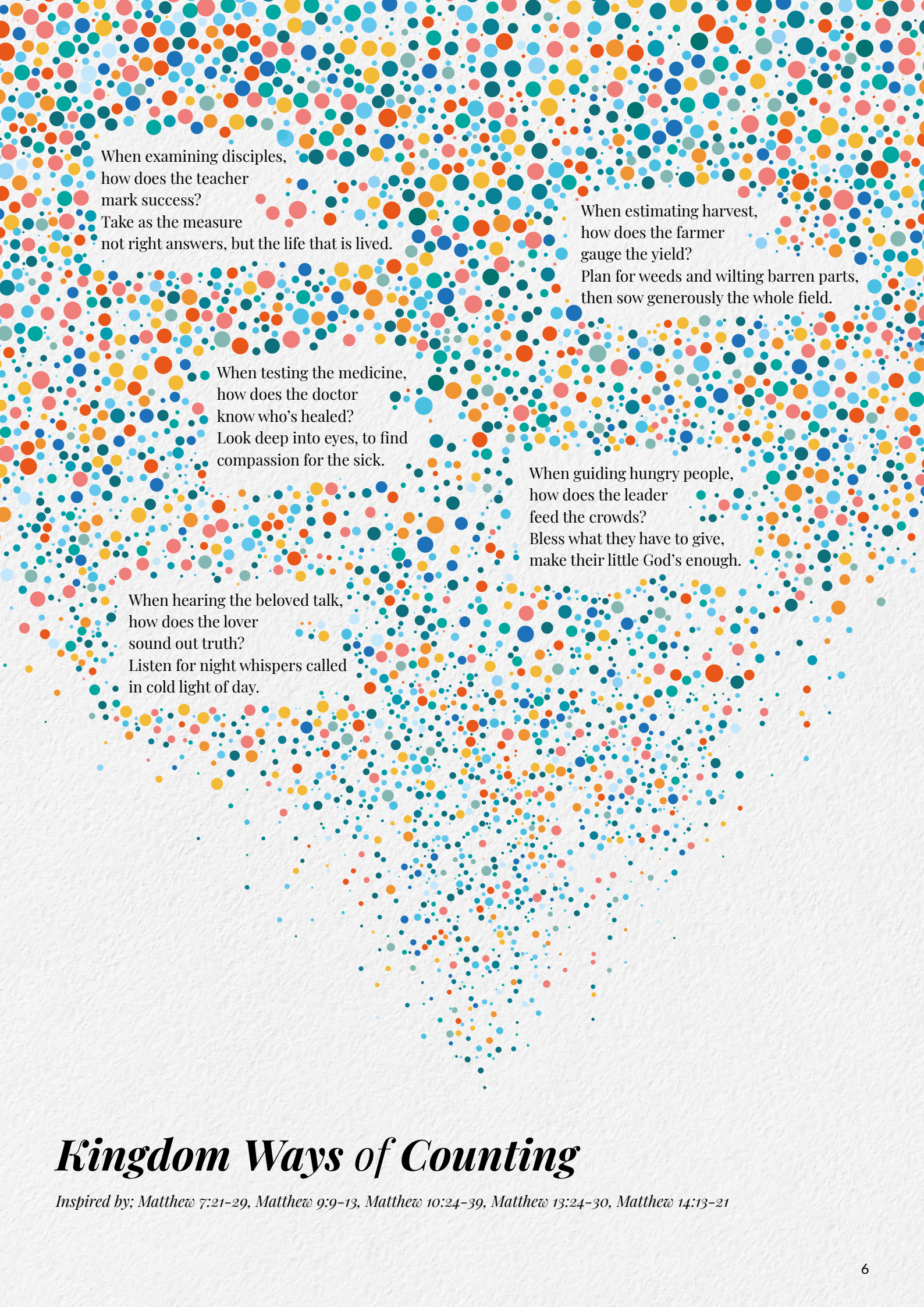
This hymn was commissioned for the launch of the Transforming Church Vision.
Written by Ally Barrett (www.reverendally.org) and used by permission.



Our strategy for continuing to live out our Transforming Church vision in the fullness of the mission and ministry that God calls us to is expressed for this season through the Core Principles, illustrated below and which are expanded on throughout this document.



Our strategic Core Principles and bespoke Transforming Church Vision reflects the heart of who we discern God is calling us to be as Church of England Birmingham. This is at the heart of our hopes and prayers for the discernment of our new diocesan bishop.



When examining disciples,
how does the teacher
mark success?
Take as the measure
not right answers, but the life that is lived.

When estimating harvest,
how does the farmer
gauge the yield?
Plan for weeds and wilting barren parts,
then sow generously the whole field.

When testing the medicine,
how does the doctor
know who's healed?
Look deep into eyes, to find
compassion for the sick.

When guiding hungry people,
how does the leader
feed the crowds?
Bless what they have to give,
make their little God's enough.

When hearing the beloved talk,
how does the lover
sound out truth?
Listen for night whispers called
in cold light of day.

Kingdom Ways of Counting

Inspired by: Matthew 7:21-29, Matthew 9:9-13, Matthew 10:24-39, Matthew 13:24-30, Matthew 14:13-21

The qualities and skills of the next Bishop of Birmingham

“In the centre of Birmingham is a place where Christians gather to pray and to remember the work of Saint Chad in the 7th Century. Walking through the fields and forests that covered the West Midlands in those days and refusing to ride a horse so that he could talk with those he met along the way, St Chad shared the good news of Jesus Christ where ever he went.”^[1]

Through a process of prayer, discussion and listening, the Vacancy in See Committee has discerned the following qualities which are most sought in the person of the next Bishop of Birmingham. The words and expressions below have been captured verbatim from that process. We are praying for a bishop who will be...

A shepherd

who deeply loves the Church of England Birmingham family and unites this family in Jesus Christ, his person and his teachings. A bishop who will be a focus for unity, while holding their own theological integrity and demonstrating gracious hospitality across our diversity. A person instinctively intergenerational, mindful of our need to grow younger. A unifier as exhibited through a deep heart for intercultural work, and actively seeking racial justice within the church and society. A bishop who genuinely relates to all charisms and traditions and can guide us in our diversity as a reflection of God's economy and his heart for all his children.

An enabling, visionary leader

who releases the people of the Church of England Birmingham, in mission, in proclaiming the Good News, in fostering healthy missional parishes and in church planting. A leader of pioneers, who can offer understanding and encouragement, ensuring good management while inspiring innovation. Someone who demonstrates Jesus-centred and Jesus-shaped faith and living. Who draws on that faith to lead others and model collaboration, with boldness, compassion, understanding and encouragement.

An encourager and discerner

who will be able to interpret the different parts of our church in Birmingham to each other, affirm, challenge, and care for Church of England Birmingham. A bishop, who rooted in prayer, scripture, tradition and reason, can lead and oversee the mission of a diverse church expressed through a network of oversight areas, parish churches and innovative expressions of church, so that all reach new people in new ways. A bishop who can interpret the world to the church and the church to the world, and the church to themselves. A person who is inclusive, bold, humble and able to tackle the big stuff. A permission-giver; not an autocrat. Somebody who will roll up their sleeves and encourage active, intentional and communal living out of our faith and shared witness.

An overseer

with a zest to teach the bible and model an energised life founded by prayer. Pastoral and affirming. A leader and nurturer of other leaders, Lay and Clergy, with consistent energy for church growth and ministry and mission to children, young people, students and intergenerational groups. Someone who will share and champion our commitment to long-term whole diocese strategic planning, for which Church of England Birmingham is regularly recognised at national church level. A bishop who can affirm and draw out the gifts of others, enable faithful, grounded improvisation, and is willing to join us on our continuing journey with commitment and deep engagement.

A bridge builder and reconciler

in a multi-faith society with a love for the city, rural and urban estates, our new bishop will need to be able to rapidly live out a love for Birmingham and the West Midlands. Someone who can welcome all and is able to hold the space where difference emerges. Someone able to articulate and live the constants of the gospel in a changing context, and to speak into our diversity in a culturally appropriate way, listening for the silenced voices. Ready to learn, what the future of Birmingham looks like and invest in regional relationships. Enjoying a robust missional theology, which encourages the Church of England Birmingham to bear witness innovatively, confidently and sensitively, reflecting a diversity of paths. A bishop who has confidence to speak into the public square and who will love the city and our region with a warm heart, inhabiting the role of Bishop of Birmingham in such a way as to grow and sustain relationships for the good of the city and region and the growth of the kingdom.

Growing churches at the heart of each community

Grow in number of disciples (more)

Current CofE Birmingham internal statistics show worship attendance across our parishes encompasses a small slice of population, standing at 1% church attendance per capita.^[2]

Reflecting on our recent Core Principles articulation, it has been discerned that key to realising our Transforming Church Vision to 'Grow Churches at the Heart of Each Community', is a significant growth in the number of disciples, representing the wide diversity of the CofE Birmingham.

We, the Church, actively acknowledge we are all called to be missionary disciples, learning to see God at work in our lives, church and the life of our world. We are called to be transformers of our communities.

The dynamic nature of mission consistently flows out from the Trinity, connecting with Jesus' call to make new disciples. Same faith, same God, but Jesus always calls us to a freshness about how we listen to and forge relationships, engaging the hearts, minds, and lives of a new generation. Focusing on the vision that God is giving us, requires a focus of energy on growth in number of disciples across the traditions and social, cultural and economic backgrounds.

The Church of England Birmingham encompasses the full range of traditions in its parishes. From rural to inner-city, civic to local, gathered to eclectic, wealthy to impoverished. The diversity is a great strength and gift.

We are proud of our church schools, while recognising the majority of young people in the diocese attend schools which are not part of the CofE Birmingham family. Our new bishop would understand the breadth of educational experience available in the region, encouraging local ministry and engagement to engage with all of our schools.

Churches engaged with school projects

28

Parishes with youth groups

57

Parishes with youth projects

38

Parishes with toddler groups

45

Parishes with Messy Church

37

Parishes with Forest Church

13

Since 2015 we have attracted

over £13 million

in Strategic Development Funding alone to further the mission and ministry of CofE Birmingham.

We currently have

46 active projects

around church plants and revitalisations, children and families, parish services, leadership, generous giving and much more.

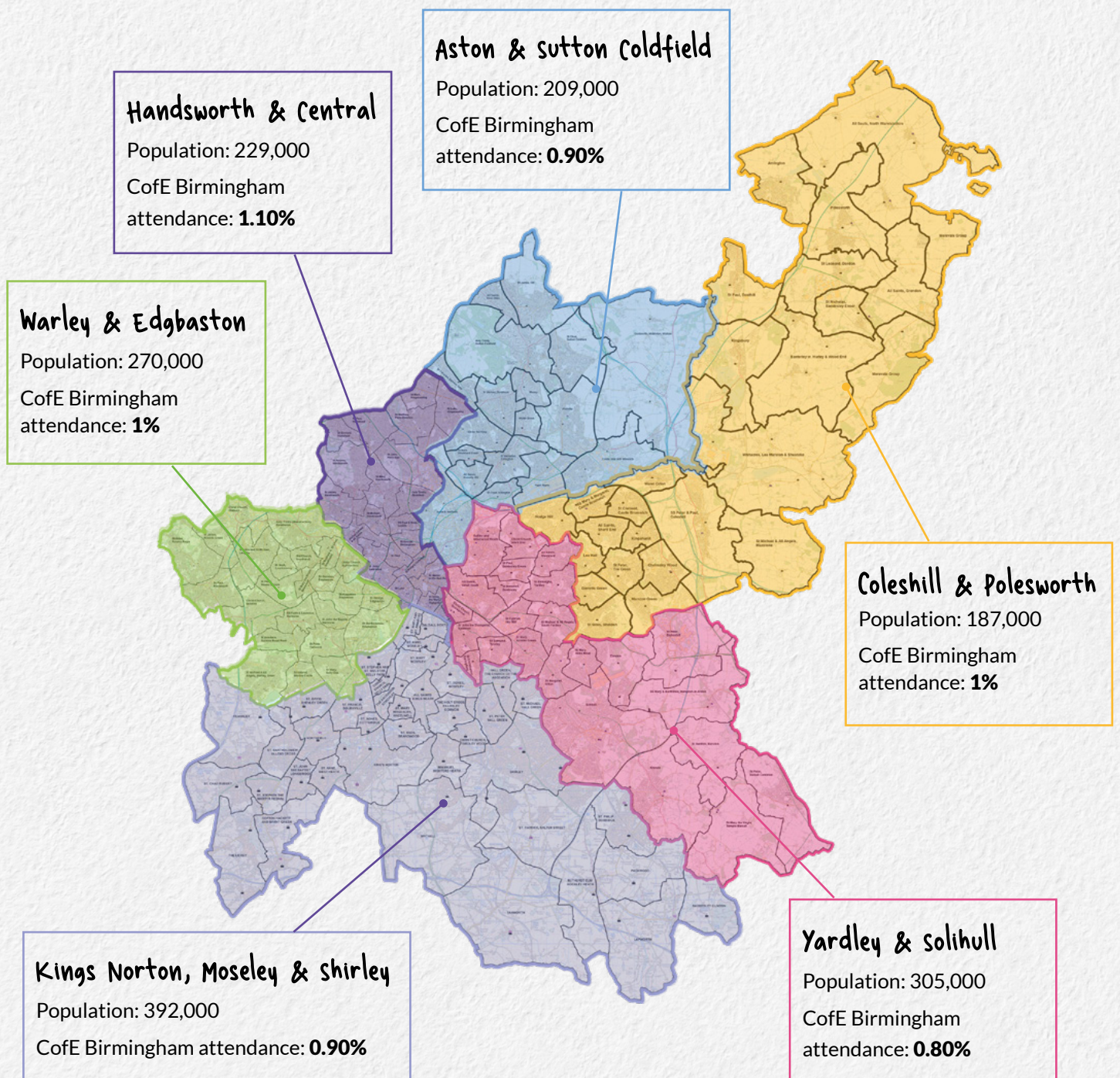
In **2016** [Gas Street](#) resourcing church launched in the city centre. Currently welcoming a regular congregation of over 1000, including a significant student community.

Engage with children, youth, families and other missing generations to reflect the age profile of the wider population across the diocese

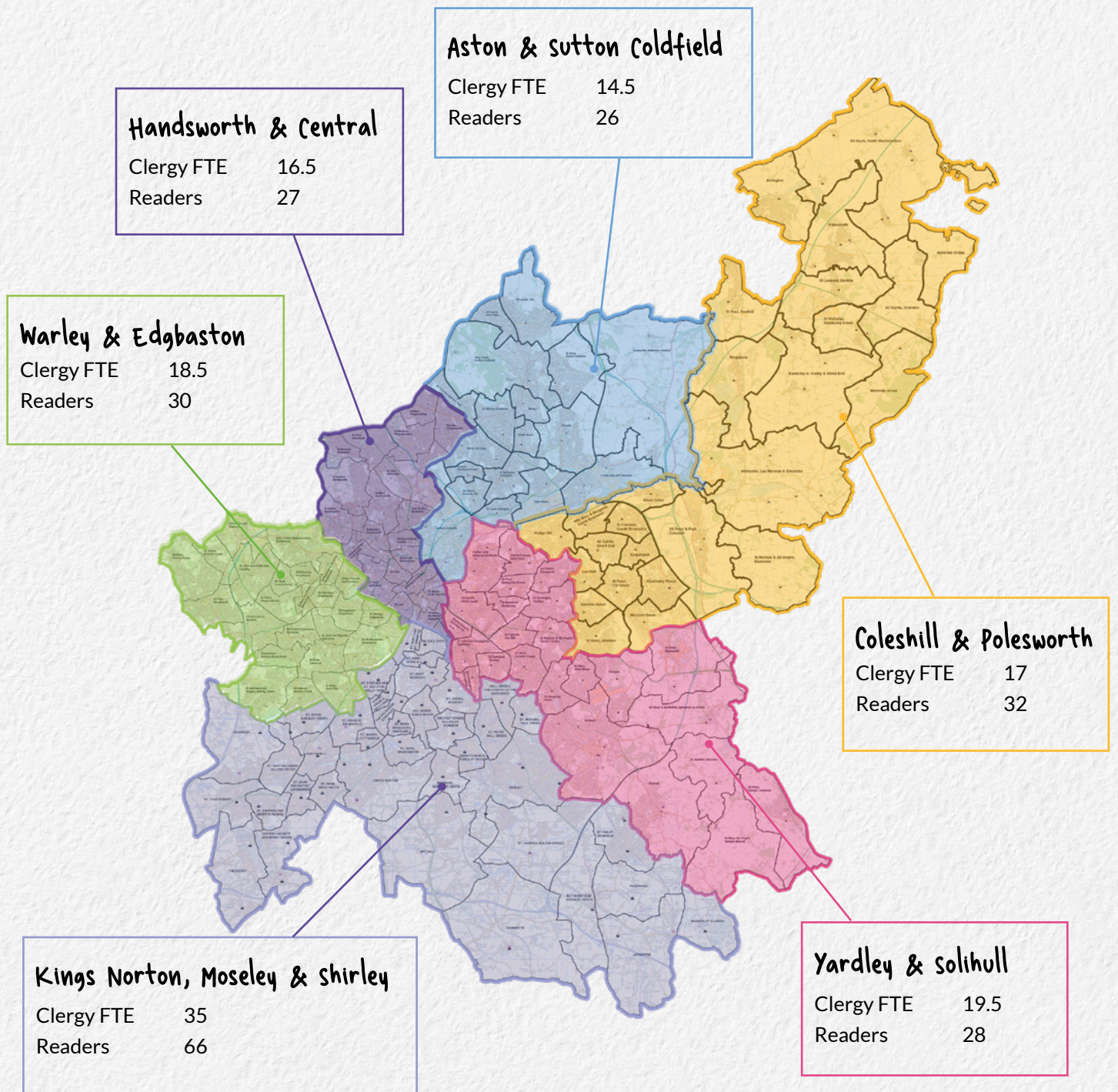
We believe church comes alive when all generations come together to learn from one another, encouraging and challenging each other to live and be more like Christ.

Within the six deaneries of our region we enjoy a high population of younger people and professionals, the energy of innovation is key to working with our partners, generating new ties and fruitful relationships, ministries, and in identifying mission and outreach fields.

Total population: 1.6 million



The CofE Birmingham has the lowest attendance per capita relative to other dioceses. Our Transforming Church vision is our response to this and our provision of clergy and local lay leaders across the diocesan region reflects the population density.



36 Curates currently serving in title parishes - of which 30 are training for Primary Responsibility (stipendiary) posts and six for Assistant Ministry (self-supporting).

In June 2023, we are expecting to **ordain a further 10 deacons**, nine of which we expect to be training for Primary Responsibility roles, and one for assistant ministry.

Flourishing ordained and lay leadership that reflects the diversity of the wider population across the diocese

The gifts and callings of Lay and Ordained Ministry is valued equally in the CofE Birmingham. Our unique and leading People & Places programme, initiated in 2019, is the framework to imagine Mission and Ministry in which the CofE Birmingham operates to enable its leaders and to live out its vision for 'Growing churches at the heart of each community'. We are seeking a bishop who will come alongside us with commitment and enthusiasm for our long and intentional direction of travel, as we continue our re-shaping of mission and ministry through People & Places, in the midst of our deep outworking of our Transforming Church vision.

The traditional model where each church is led by a single 'vicar' is no longer solely sufficient to serve the people of our diverse, urban and rural region, and reflect the culture diversity of our worshipping communities.

Instead, we are working towards a model of Oversight Areas, where within every local Christian community there is a trained and equipped leader (who may be a clergy person) as the focus for a ministry team. Teams envisaged as drawing from people of all backgrounds and intentionally including those of GMH/UKME. Our first cohort of Local Ministers, both lay and ordained, are exercising leadership in their parishes, and the discernment process for a second cohort is under way. The Oversight Minister (a priest) will be responsible for animating local mission and ministry, working with colleagues, who may be stipendiary, self-supporting or employed.



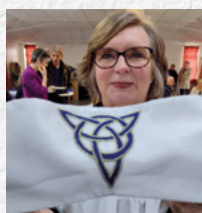
All Saints, Gravelly Hill

Christine Hibbert enjoys continuing ministerial development to nourish her ministry as Reader at All Saints, Gravelly Hill; she also works as a Housing Officer for over 55s.



St Edmund's Tyseley

The Revd Ann Knight and Mrs Dot Pooler are Local Ministers for St Edmund's, Tyseley, sharing leadership with the support of neighbouring priest, Revd Tom Thomas. Ann serves as an ordained minister and Dot as a licensed lay minister.



Immanuel, Highters Heath

The Revd Sandra Langston was appointed Local Minister Ordained for Immanuel, Highters Heath, supported by the priest-in-charge Revd Debbie Collins.



Holy Trinity, Birchfield

Keith Rutherford is an engineer and also Reader at Holy Trinity, Birchfield. CME events help to sustain his ministry in the workplace and the parish.



Resurrection Parish, Smethwick

Nick Ross combines ministry as SSM Associate Priest in the Resurrection Parish, Smethwick with leading phase 2 of Reader formation. Nick has expertise in professional development from his career in nurse education. He is a leader in developing inter-faith relationships and reconciliation in Smethwick.



Hodge Hill Church

The Revd Dr Sally Nash is a theological educator, leading a variety of retreats and events for clergy and lay ministers, including the 2021 Away Day for commissioned pastoral teams and Curates' Retreat. Sally is also the Living in Love and Faith advocate for CofE Birmingham and SSM Associate Priest at Hodge Hill Church.

Within the fruitfulness of CofE Birmingham recognised Ministries we enable, train and deploy specialist practitioners, for example, Childrens and Families Missioners, Mission Apprentices and Church Army Evangelists. Over 200 Readers are licensed by the CofE Birmingham.

Our varied Chaplaincy ministry can be found in Prison, School and Healthcare settings and we are currently developing outreach in Higher and Further Education establishments.

Our new framework enables resources, talent, expertise and gifts to be shared more fairly across all worshipping communities, forming a supporting network and contributes towards a sustainable future for all the people and places of CofE Birmingham. Further information about our developing ministry framework is available on our [website page People & Places](#).



To support and nurture this flourishing leadership, CofE Birmingham provides a rich ecology of learning, focused round particular roles and responsibilities.

Many of our learning programmes are delivered in collaboration with regional colleagues in other West Midlands' dioceses, with CofE Birmingham taking a distinctive lead in CME regional training. Our in-house Reader training is distinctive to CofE Birmingham as is our commissioned Pastoral Care teams, curacy formation, our developing of pioneer curacies and our new Local Ministry Lay and Ordained Pathways. Our approach to resourcing Clergy

learning is set out in a range of policies to be found in the [Clergy Handbook](#).

Additionally, CofE Birmingham Leadership pathways is a National Church funded key initiative to support leadership development and discipleship for lay leaders and clergy. Pathways offers and develops fresh ways of learning for those who want to grow as disciples and opens new paths to fruitful lay and ordained leadership. Learning offers include an integrated experience of working with a mentor with a wide range of learning opportunities (in person and online) accessible via the [Pathways learning platform](#).

Clergy, Authorised and Licensed Lay Ministers are encouraged to be theologically reflective practitioners and life-long learners. We are also passionate about well-being and have formed a clergy well-being advisory group as well as making a commitment to promoting a good work-life balance for lay leaders and workers.



The CofE Birmingham is committed to promoting a safer church for everyone including those who are survivors of abuse. We are continuing to deliver Safeguarding best practice, ongoing training and modelling through strong and equipped leadership and robust, accessible, systems.

For more information please visit [the CofE Birmingham Safeguarding webpage](#).

Growing churches **at the heart** of each community

Underpinned by a culture of prayer

Our participation in God's life and saving work is always fresh. Under the guidance of the Holy Spirit, our co-operation takes new shape and forms of expression in response to human need and mission opportunity in different times and contexts. As CofE Birmingham, being a dynamic community of faith is in our DNA, as we bring the grace of Christ in each generation.

Great value is placed on the importance of personal and corporate prayer, discipleship, reflection and practice of discernment of God at work in our region, our lives, and in the lives of others, the nation and the world. [Praying Together](#) is our monthly diocese prayer cycle gathered from across the CofE Birmingham as a compilation of short written expressions, images, art, voice tracks or phone films, and also made available as an accessible printed or braille version.



Make a joyful noise to the LORD, all the earth.

*Serve the LORD with gladness;
come into his presence with singing.*

*Know that the LORD is God.
It is he who made us, and we are his;
we are his people and the sheep of his pasture.*

*Enter his gates with thanksgiving
and his courts with praise.
Give thanks to him; bless his name.*

*For the LORD is good;
his steadfast love endures forever
and his faithfulness to all generations.*

- Psalm 100



Birmingham Cathedral is the seat of the Bishop of Birmingham. It is home to a welcoming community, offering the corporate worship of The Church of England, enriched by the Anglican choral tradition. It prays for and serves the people and communities of the diocese offering hospitality as a place of gathering and connection for people of all faiths and none in order to witness to God's love for all and to serve the common good.

The cathedral is the oldest building in the city still used for its original purpose, and is home to some remarkable treasures, as well as the largest green space in central Birmingham. The Cathedral Community works closely with various local faith groups, businesses, institutions and charities, to promote community cohesion and to support the important civic role of the cathedral and enrich its life as a parish church.

For more information please visit the [Cathedral website homepage](#).



Grow in depth of discipleship

CofE Birmingham seeks to provide and support opportunities for every christian and church community to grow in their capacity to live out the Good News of Jesus, equip them for serving him and be servant leaders in every sphere of life.

To encourage meaningful and expressive discipleship, the Way of Discipleship has been developed. A collection of new flexible materials designed to help those who want to dig into the big questions, and to stretch those who have been disciples for a while but wish to grow more in their lived experience. An adaptable course runs alongside and in complement to broader learning on the Pathways platform and primarily in support of parish discipleship activities and programmes. It also forms the foundation for further training in ministries and reflects our corporate ambition to be a people of God who are deeply invested in our relationship with him.

Further information is available on the [Way of Discipleship website](#).



Central to CofE Birmingham discipleship is understanding and bearing witness to God's heart, found in the richness of our shared diversity.

The ministry of female clergy, including the Archdeacon of Birmingham and the Bishop of Aston, is welcomed unreservedly. Women play a full and active part in the life, ministry and work of the CofE Birmingham.

We are seeking a diocesan bishop who is willing to ordain women. Our bishop needs to be fully and warmly committed both to the ministry of women, ordained and lay, and to the ongoing extended contribution of the bishops who offer extended episcopal oversight, as framed within the Five Guiding Principles, and our clear commitment to Mutual Flourishing.

44%
of licensed parish clergy
in our diocese are women

33%
of our incumbents
are women

1/3
of our full time Area
Deans are women

6 of our benefices are served by the Bishop of Oswestry and 2 by the Bishop of Ebbsfleet



We are also actively continuing in our commitment to affirming and including people with Disabilities in the life of the CofE Birmingham, through our [All Inclusive All Accessible](#) - Gold Standard campaign begun in 2019 under the direction of the Bishop's Advisor on Disability and accompanying Working Group.



Also, part of our intentional shared discipleship is our corporate journey through the learning resources of Living in Love and Faith, as we seek to keep hearts and minds open to each other and the promptings of the Holy Spirit, while recognising that there are a diversity of views held on marriage. We seek to welcome in our worshipping communities those from the LGBTQI+ community and the CofE Birmingham also has a diocesan LGBTQI+ chaplaincy initiative.

We are proud that one of our majority church multi academy trusts, the Birmingham Diocesan Multi Academy Trust (BDMAT), serving 19 of our schools, has recently been recognised by Ofsted as being a beacon of diversity, particularly in regard to GMH/UKME and LGBTQI+ inclusion.



LLF Course 21/22 - 26 people (21 parishes)

LLF Facilitator Training - 46 people (35 parishes)

LLF resource for use with young people - 14 people (14 parishes)

LLF Training 17 Jan-14 Feb 2022 - 10 people (10 parishes)

"If then there is any encouragement in Christ, any consolation from love, any sharing in the Spirit, any compassion and sympathy, make my joy complete: be of the same mind, having the same love, being in full accord and of one mind. Do nothing from selfish ambition or conceit, but in humility regard others as better than yourselves. Let each of you look not to your own interests, but to the interests of others. Let the same mind be in you that was in Christ Jesus"

Philippians 2: 1-5

Achieve financial sustainability

The distinctive life of the CofE Birmingham began in 1905 and the ethos of being a 'Fresh Expression of Diocese' has continued to infuse and inspire our ministry to be one of innovation and energy. However with being a relatively 'new' diocese, comes the challenge of not enjoying historic reserves or long established financial sources. Adding to the challenge, is decreasing Common Fund contributions and the long-lasting impact of the Covid pandemic.

Working regularly with the National Church and other partners, we are grateful for their belief and encouragement in the innovations CofE Birmingham continues to table and inspire. Yet we recognise and seek to maintain our own sound and developing financial life in strong collaboration with our parishes and oversight areas.

Since 2010:

The number of planned givers has **fallen by 20%**

However giving levels have increased, **resulting in total planned giving falling by 'only' 10%**

The average age of our congregations is, or **approaching, retirement**

After retirement, disposable income **falls by 3% per annum** for a period of 10 years

For more information about our finances, our [Annual Report for 2021](#) can be read on the CofE Birmingham website.

We believe in a generous God and our own generosity is a testament and hallmark of our faith in action. The ministry and mission of our parishes is largely funded through the incredible generosity of those who give to their local church.

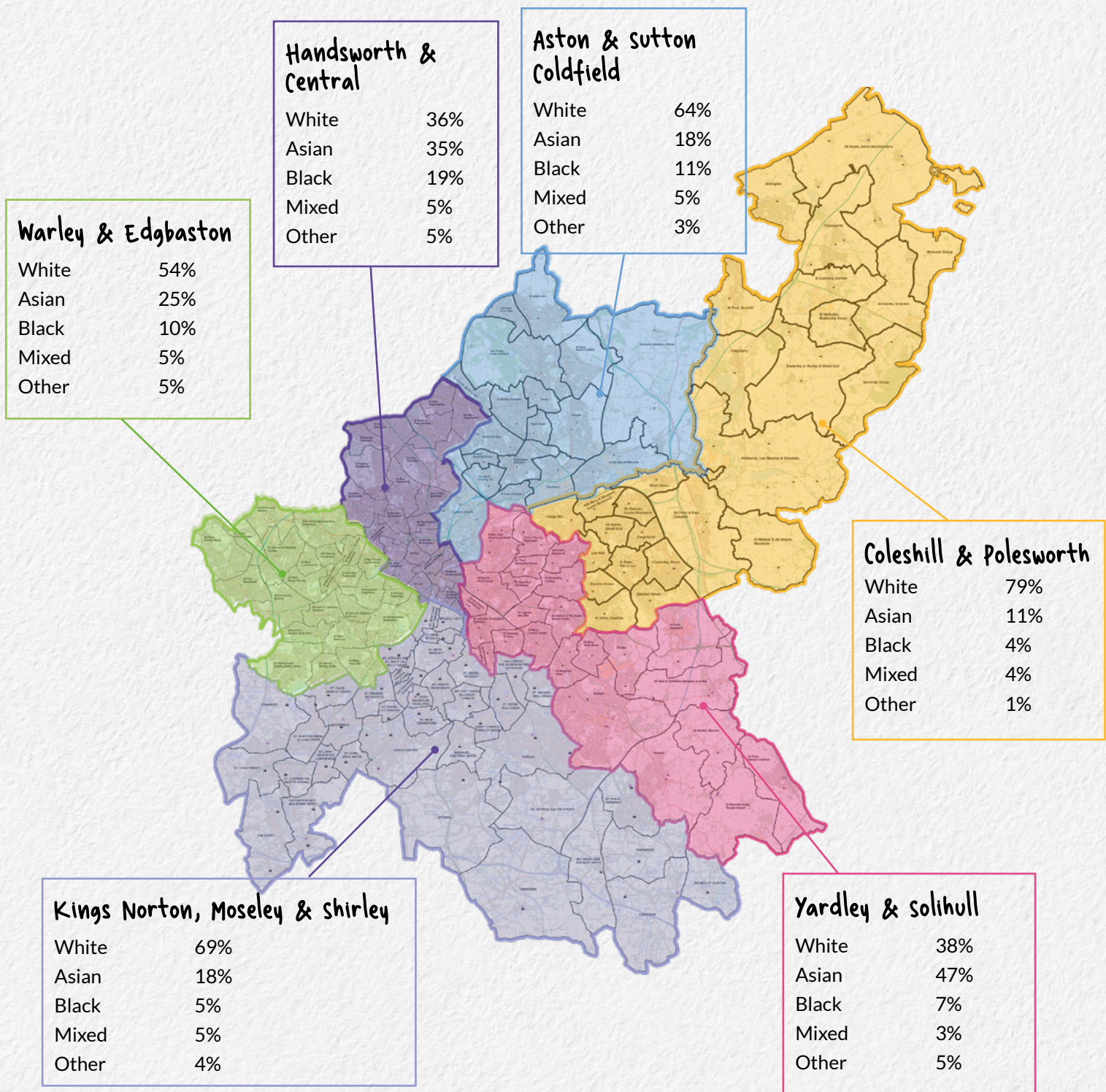


The work of our Generous Giving Advisor with parish leaders is supported by diocesan financial colleagues and our robust systems of governance and stewardship. Living generously is first and foremost a part of our everyday faith and discipleship.

Growing churches at the heart of each community

Worshipping communities are diverse (meaning representative of our communities) and accessible to all

The six inter-connected Deaneries of CofE Birmingham enjoy a unique, proud and vivid diversity. Key to our growth and life together as the family of God is ensuring all these traditions and backgrounds are welcomed, engaged and reflected within our church communities.





We are on an ever-deepening journey to understand our own past and to share with one another, our histories and the personalities of our neighbourhoods.

In the person of the Bishop of Birmingham we seek someone who will relate directly to our significant rural parishes, discerning common bonds and challenges and encouraging strong mutual relationships. A person who will value, maintain and support our work on estates; who will be excited by what is going on here in all our unique, varied and valued contexts.

Birmingham has the
**3rd
highest**

proportion of estates parishes in the Church
of England

96%

of parishes have **500+ social housing units**,

while

41%

have a **strong estate character**

CofE Birmingham is committed to
maintaining an **on-going faithful presence
on estates.**

There has been **missional energy in many
parishes and at diocesan level** both through
an Estates Group, through People & Places
and Strategic Development Funding (SDF).
The Local Ministry Pathway forms local focal
leaders in estate churches.



A keenly dynamic part of our ever-deepening journey is reflected in the role of the CofE Birmingham Racial Justice Board, to consider, prayerfully reflect, campaign, advise and promote actions on issues of equity and racial justice concerning GMH/UKME Anglicans in Birmingham.

The CofE Birmingham acknowledges the shameful history of racism in our nation and our church and fully supports the recommendations in the From Lament to Action report published in April 2021 and the need for urgent change, to ensure that we build bridges of integrity and reconciliation, creating a church full of communities that participate in stamping out the sin of racism and where all feel included and valued.



Grow in partnerships and impact in the community



CofE Birmingham has been opportunities in the parish contexts of Rural, Urban Estates, City, cultural diversity, and the Healthcare, Education and Arts sectors, and through relationships with our five local Authorities covering the CofE Birmingham. The high density of population also presents its challenges, for example, a high level of local homelessness and poverty. Birmingham is also key in the arrival of HS2 across the region.

The CofE Birmingham also enjoys close working with many partners of good will.

Leading in the partnership of THRIVE TOGETHER BIRMINGHAM, figureheads our Community Regeneration projects, activity and conversations. Our Community Regeneration focus is committed to play our part to improve the lives of people in the most disadvantaged neighbourhoods of the CofE Birmingham and to create neighbourhoods that are clean, safe and generous. Churches are encouraged to play a role in local regeneration activity while the wider diocesan team work to influence regional and local authority policy making.

During any given week, many of our church buildings are open providing a base for community activities run by the church itself or other organisations.

The THRIVE partnership and ministry is unique to CofE Birmingham and leading nationally in this field. For more information please visit the [THRIVE Website](#).





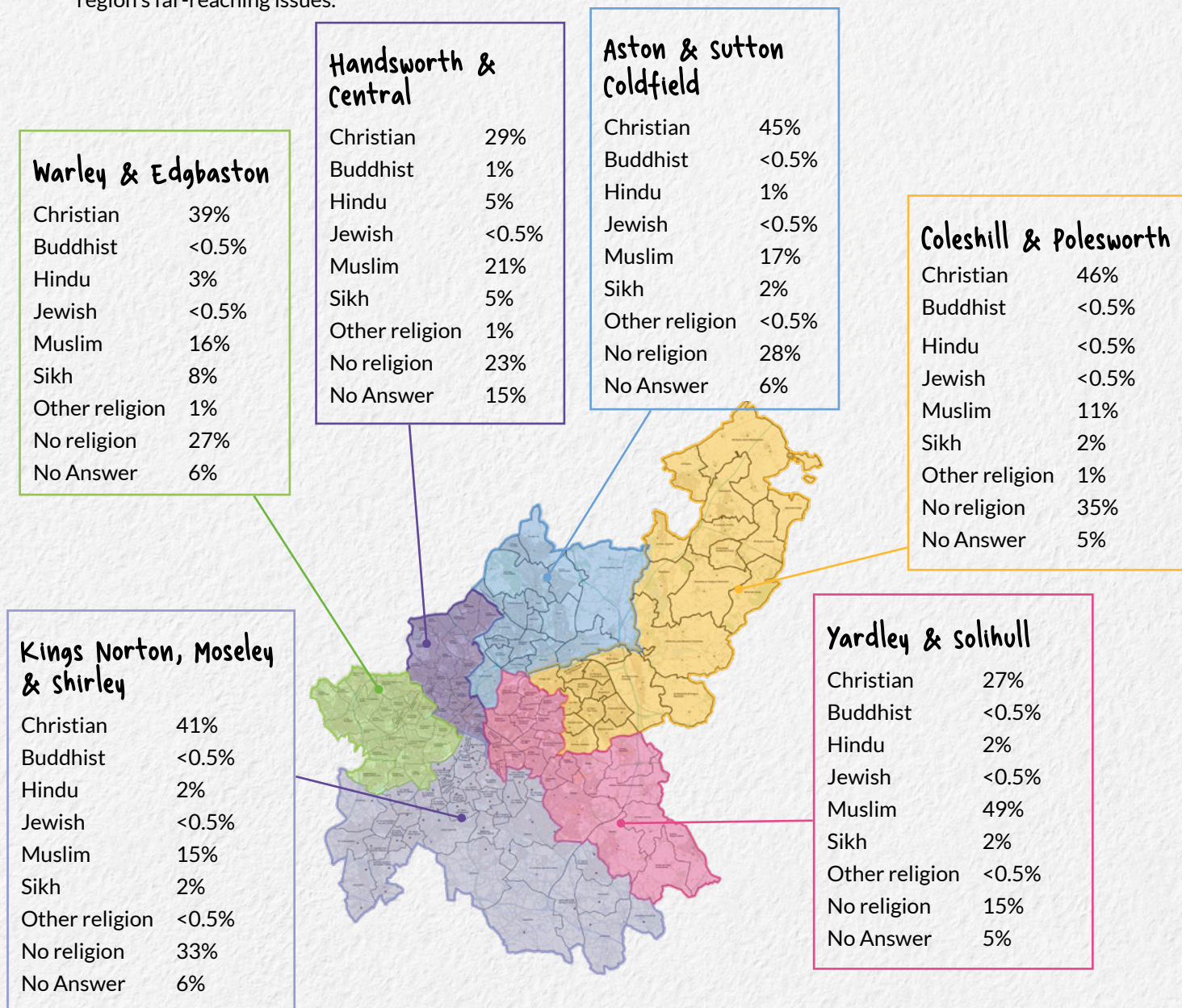
The suffragan Bishop of Aston, The Rt Revd Anne Hollinghurst, has taken a lead in developing new relations with the Further Education sector and partnerships tackling Modern Slavery, as well as the CofE Birmingham's response to the Coming Home Report. Consequently, we are poised to become one of three pilot dioceses working with the national team on new housing schemes.



We have an intentional approach to Ecumenical partnerships and our relationships with other Faiths. Birmingham Churches Together, The Birmingham Faith Leaders' Group, Mayor Andy Street's 'Faith Strategic Partnership Group', and ['The Birmingham Faith Covenant'](#) are some examples that have offered a fruitful, and proactive collaborative experience across the region. The Bishop of Birmingham would continue to make a significant contribution to local faith groups, be involved in Local Authority policy debates and support the far-reaching work of our Presence & Engagement Parishes. The fruit of these deep relationships being seen in examples such as Birmingham City Council being the first local authority to sign the Faith Charter and the development of the Birmingham Charter committing churches across Birmingham to unity and stamping out racism.

Birmingham is the major diocese to have diverse faith communities in numbers similar to London. 2021 census results revealed that this diversity continues to grow and also shapes the significant young population. Across the three main council areas of the City of Birmingham, Sandwell and Solihull, those recording themselves as Christian formed 37.1% of the population, (9.1% lower than the national average), those of no-religion 25.5%, (11.7% lower than the national average), and those of other faith communities 31.4%, (three times the national average). Of these the two significant communities are Muslim, 23.6%, and Sikh 4.6%.

Faith enjoys a unique place in the lives of the people of our region. Birmingham is a city of many faiths, with our local congregations living out their parish callings in neighbourhoods made of diverse and large communities of other faiths. Opportunities of conversations are welcomed alongside Church involvement in Civic key moments and memories. The Bishop of Birmingham would continue to develop close ecumenical ties and investment in the region's public services and private business networks, along with cultivating friendships with local councillors, Arts, Healthcare and Education professionals. These close relationships have enabled the CofE Birmingham to be at the forefront of initiatives, decisions and influence, offering ministry and tackling the region's far-reaching issues.



Additionally many CofE Birmingham churches are linked across continents through the friends and families of church members, mission partners, campaigns and social action projects. The CofE Birmingham collegiately enjoys links with [Dioceses of Malawi](#) and the [Anglican Church in Bolivia](#) with various visits affirming our mutual commitment to support one another in mission across continents.

We believe that being part of a world wide church helps us to understand more fully the work of God through Jesus Christ in the world today, reminds us of our responsibility to care for all of God's creation and challenges us to live lives that contribute to a fairer and more just world economy.

Environmental sustainability

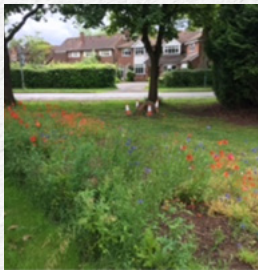
The CofE Birmingham Environmental Board was convened to provide leadership to the parishes and deaneries, and accountability:

- to work to become carbon net zero by 2030;
- to ensure that the environment is properly considered in investment decisions and in the maintenance of buildings under its control, such as parsonages, church schools and other buildings;
- to encourage the Diocesan Advisory Committee for the Care of Churches to ensure that the environment is properly considered in the maintenance and development of churches and churchyards;
- together with others, to engage with issues such as litter, air pollution, travel arrangements and green public spaces to improve the environment in places where we are engaged.



St Michael's, Baddesley Clinton

In 2020, St Michael's achieved Carbon 'net zero'. This included paper consumption and emissions arising from car travel by the congregation coming to church and all who make the church function, including tradespeople. St Michael's also donated to Climate Stewards' projects certified to reduce Carbon emissions.



St Peter's, Balsall Common

In 2021, St Peter's worked towards the Gold Eco Church Award in spite of slow progress due to the pandemic. They now have a wildflower garden and a new hedge and all the church lighting has been replaced with LED lamps. They held a couple of climate specific services and are negotiating with neighbouring institutions about the possibility of a joint community heating project.

ECO CHURCH
AN A ROCHA UK PROJECT



CofE Birmingham Episcopal Structures and Governance

Within the Governance structures of the CofE Birmingham we actively encourage and consciously seek diverse representation of all the people of our church communities.

The Vacancy in See Committee has resolved that the next Diocesan Bishop should ordain women in accordance with GS 1076 'Women in the episcopate House of Bishops declaration of the ministry of bishops and priests'.

The previous Diocesan Bishop had a focus on the public square, city and civic relations, with Directors of Interfaith and Community Regeneration amongst those reporting directly to him. The suffragan Bishop of Aston has exercised main episcopal oversight of the areas of vocation, mission and ministry with the relevant Directors reporting to her.

The CofE Birmingham has had only one Archdeacon in active ministry since summer 2021, the current Archdeacon of Birmingham. Assistant Interim Archdeacon support is being put in place during the vacancy, but it will be an early task of the new Bishop of Birmingham to appoint a new Archdeacon of Aston. Parish vacancies and appointments have been led by the archdeacons, and the Archdeacon of Birmingham also carries a portfolio including a role as the Bishop's Adviser on Healthcare Chaplaincy and is a Trustee of Churches Together. The Dean of the Cathedral is Chair of the Board of Education, and the Director of Ministry has carried portfolio oversight for Higher Education Chaplaincy amongst other areas.

The new home for the CofE Birmingham diocesan wide staff, Citadel, is a building committed to environmental consciousness. This move is a significant step towards our net zero target. There is also a focus on creating a true sense of community and encouraging relationships with integrity within the building which is very much aligned with the culture of the CofE Birmingham family. The staff team are recognised and valued for the expertise and support they offer to parishes and colleagues.

*Gracious and Loving God,
in Christ you make all things new.
As we pray for the call of our new bishop,
we thank you that the whole earth, its people and places,
are equally precious to you.
By your Spirit, clothe us with power from on high,
and hold our hopes and fears in your love.
Grant us the needful gifts of grace
to shine with Christ's light throughout our communities,
and to work with you
to grow your church and transform your world.
In the name of our Saviour, Jesus Christ,
Amen*

Resource Library

Resource	Category
Birmingham Cathedral	Cathedral
CofE Birmingham Core Principles animation	CofE Birmingham
CofE Birmingham website	
CofE Birmingham YouTube	
CofE Birmingham Facebook	
Deanery Summaries and Introductions	
Parish Mission Support Facebook	
A Century of Celebrating Christ - CofEB 1905 - 2005 by Terry Slater	CofE Birmingham History
CofE Five Guiding Principles	CofE
Thrive website	Community regeneration
Warm Welcome	
CofE Birmingham Praying Together	Diocesan prayer cycle
CofE Birmingham Way of Discipleship	Discipleship and prayer
Birmingham Churches Together	Ecumenical
CofE Birmingham Net zero	Environment/ Sustainability
CofE Birmingham Annual Reports	Finance and DBF
CofE Birmingham Mission apprentice scheme	Funded Project
CofE Birmingham Living Generously	
Birmingham Faiths Together	Interfaith
The Birmingham Faith Covenant	
CofE Birmingham Pathways Learning Platform	Learning
LLF Resource library and information	Living in love and faith
Church of England Vision and Strategy	National CofE vision
People & Places summary and news	People & Places
People & Places FAQs	
People & Places resources and support	
People & Places Oversight Ministry	
People & Places Authorised Ministry (Local minister)	
Birmingham Charter	Racial Justice
CofE Birmingham film: Letter to a trafficker/ Modern Slavery Awareness	
2021 Census results	Region
HS2 website	
CofE Birmingham Safeguarding information	Safeguarding
DBE Schools information	Schools
CofE Birmingham World Mission	World mission

Sources

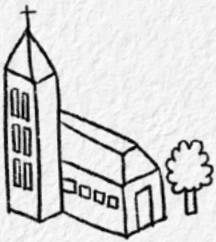
Sources

[1] [Our Origin Story - The Church of England Birmingham](#)

[2] The statistics and figures presented in this document have been sourced from the 2011 and 2021 census records, the Indices of Multiple Deprivation, Statistics for Mission, Archdeacons Articles of Enquiry and CofE Birmingham internal records.

[3] 'Kingdom ways of counting' A poem by Revd Canon Mark Pryce — from *Journeying with Matthew*, Woodward, Gooder & Pryce, SPCK 2013, p.90-91.





Growing churches at the heart of each community

